



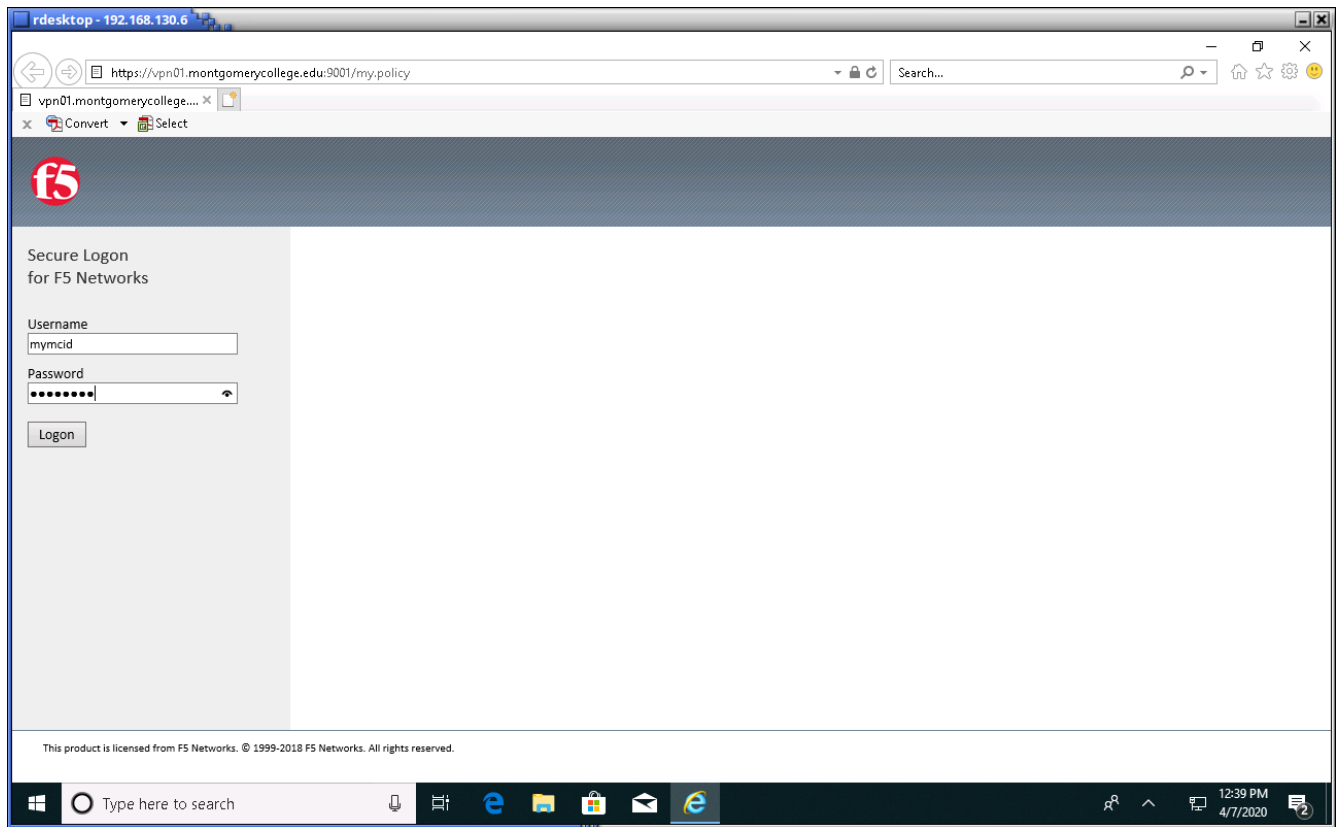
## Altiris Cloud Enable Management Installation Instructions

Please note all screen shots are from Windows 10. Other versions of Windows may differ.

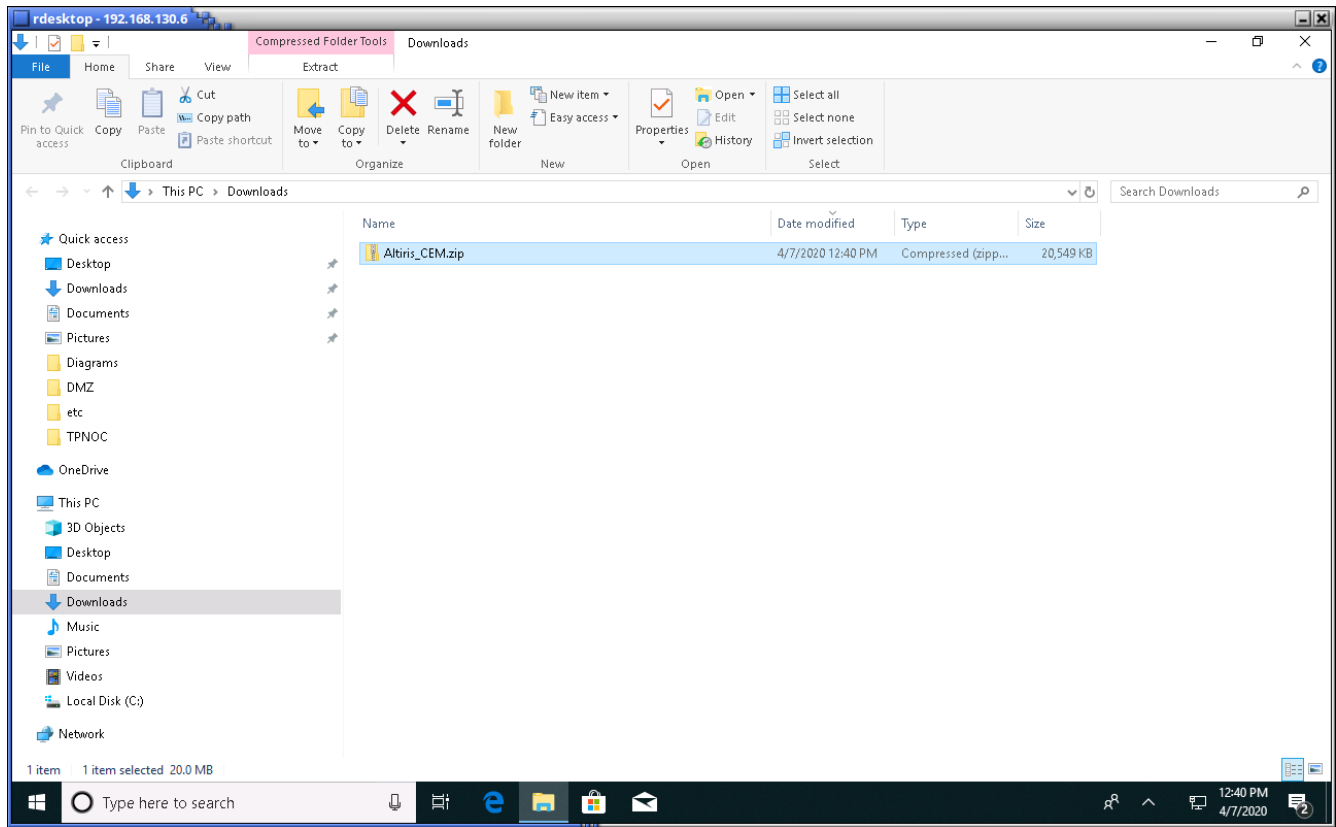
Begin the download process by clicking on the link:

<https://vpn01.montgomerycollege.edu:9001>

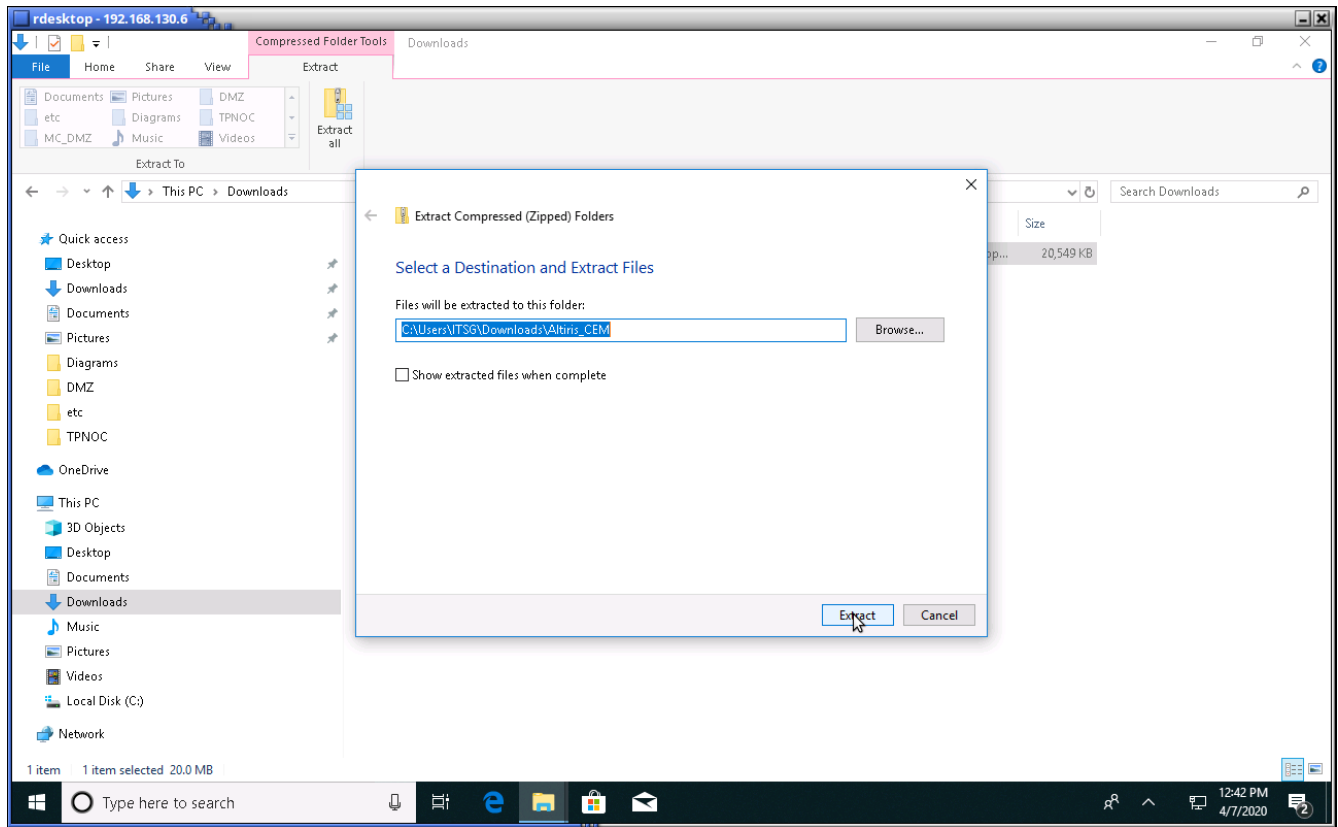
Enter your MyMC credentials when prompted.



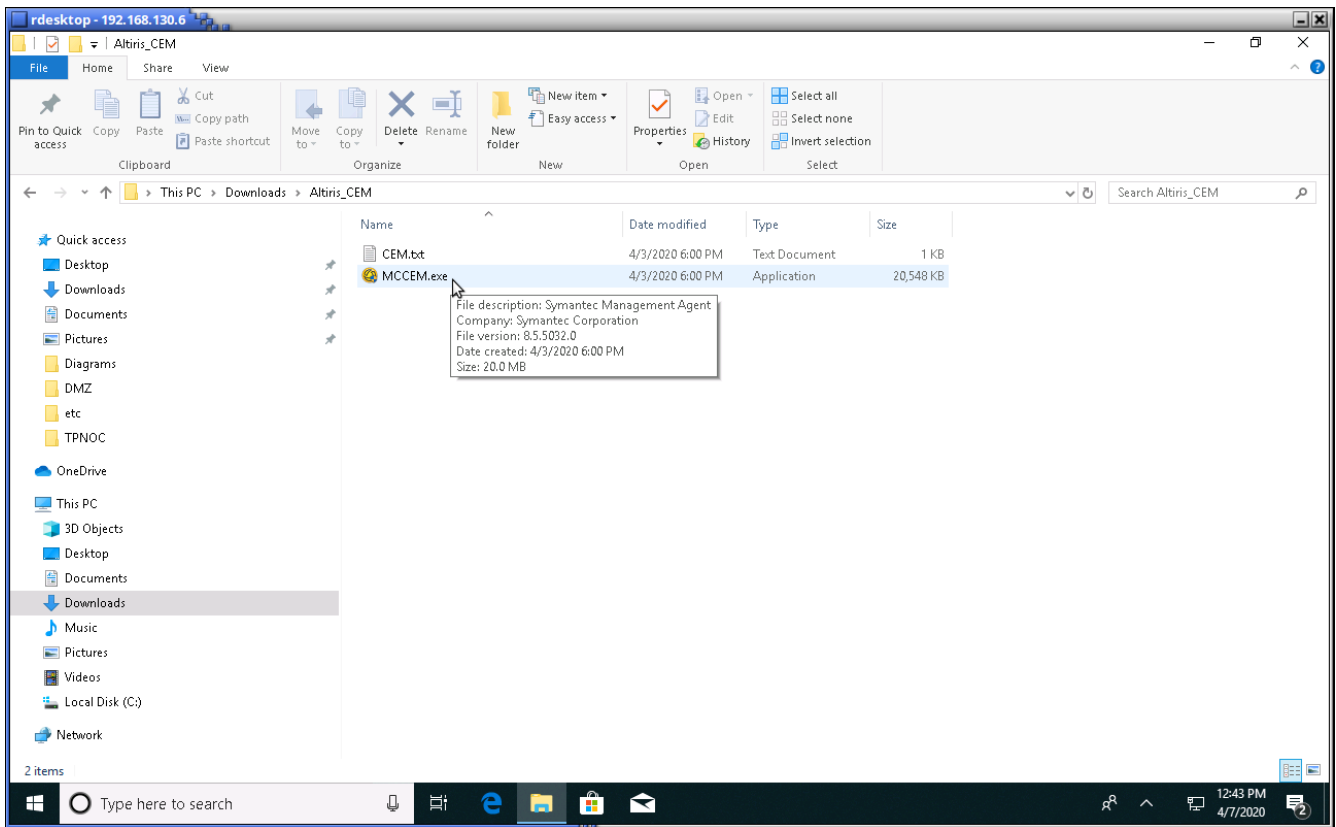
When prompted, save the file. Open the file manager, and navigate to the folder where you saved the file.



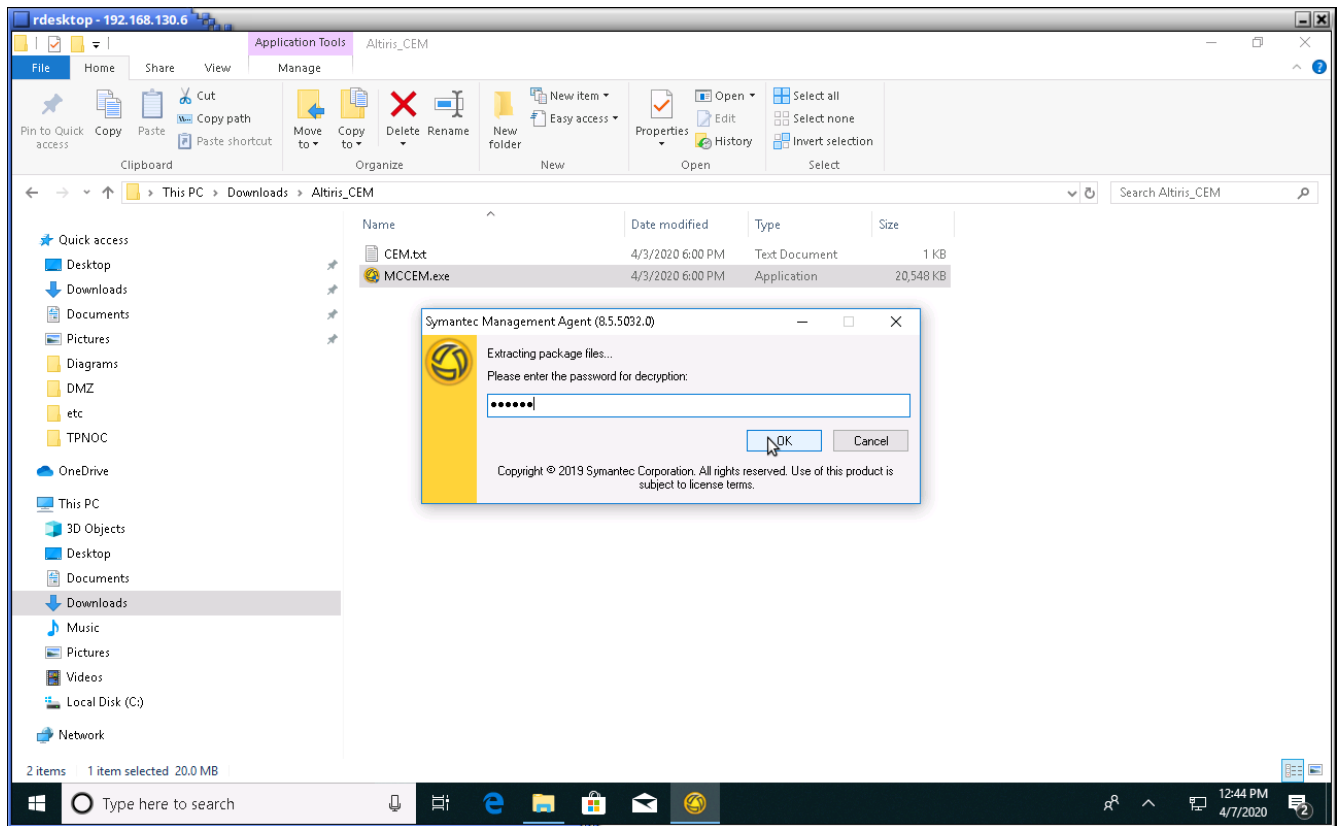
Either double-click on the file or click the Extract all button (if your file manager has one) to unzip the file.



You will see two files in the folder where you extracted Altiris\_CEM.zip. Use your favorite editor to view the contents of CEM.txt. Note the password in this file. You will need it to install the Altiris agent. Double-click on MCCEM.exe to begin the installation process.



Enter the password from the previous step.



When the installation has been successfully completed, a new icon will appear in the Windows taskbar.

