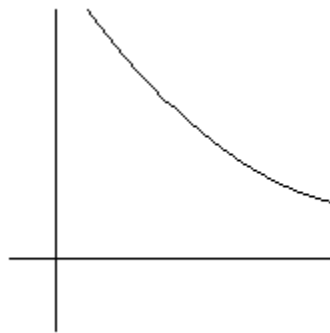
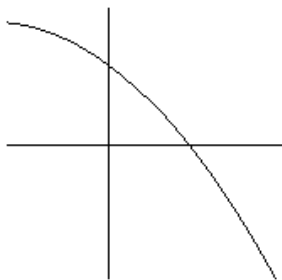


Suggested Study Plan

Please make sure to complete your WebAssign Homework

**Additional Review Problems**

1a. $f(15) = 7.58$

In 2005, bottled water consumption was 7.58 billion gallons.

b. $f'(15) = .6$

In 2005, bottled water consumption was rising at a rate of .6 billion gallons per year.

2a. $x = 2, x = 6$

b. Increasing $(-\infty, 2)(6, \infty)$, decreasing $(2, 6)$

c. local maximum at $x = 2$, local minimum at $x = 6$

d. $x = 3, x = 6$

e. concave up on $(3, 6), (6, \infty)$ concave down on $(-\infty, 3)$

f. $x = 3$

