

Name: Solution

Total Possible Points = 150 Plus 10 pts Extra Credits

- 1) City B is located at 75 miles west and 25 miles north of city A. City C is located at 100 miles east and 125 miles south of city A. Find the distance between city B and city C. You can choose city A as the origin of the rectangular coordinate system. Write your answer rounded to two decimal places, if necessary. (5 Points)

$$B = (-75, 25) \quad C = (100, -125)$$

$$BC = \sqrt{(100 - (-75))^2 + (-125 - 25)^2} = 230.49 \text{ miles}$$

- 2) Find the standard form of equation of a circle with endpoints of a diameter at (5, 9) and (-1, 3) (5 Points)

(5, 9) and (-1, 3)

$$\text{Center} = \left( \frac{5 + (-1)}{2}, \frac{9 + 3}{2} \right) = (2, 6)$$

$$r^2 = \sqrt{(5 - 2)^2 + (9 - 6)^2} = \sqrt{9 + 9} = \sqrt{18}$$

$$(x - 2)^2 + (y - 6)^2 = 18$$

- 3) If (a, 2a) is a point on the graph of  $3x - 2y = 17$ , what is a? (5 Points)

$$3(a) - 2(2a) = 17$$

$$3a - 4a = 17$$

$$-a = 17 \implies a = -17$$

- 4) Find the x and y intercepts of the following  $5x^2 + 6x - 8 - y = 0$  (5 Points)

To find x intercept let  $y = 0$ 

$$5x^2 + 6x - 8 = 0$$

$$(5x - 4)(x + 2)$$

$$x = \frac{4}{5}, \quad x = -2$$

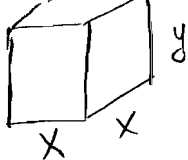
$$\left( \frac{4}{5}, 0 \right), \quad (-2, 0) \quad \text{x intercepts}$$

to find y intercept let  $x = 0$ 

$$5(0)^2 + 6(0) - 8 - y = 0$$

$$y = 8$$

$$\text{y intercept} = (0, 8)$$



- 5) An open box with a square base is required to have a volume of 50 cubic feet. Express the amount  $A$  of material used to make such a box as a function of the length  $x$  of a side of the base. (5 Points)

$$x^2 y = 50 \implies y = \frac{50}{x^2}$$

$$A = x^2 + 4xy = x^2 + 4x \left( \frac{50}{x^2} \right)$$

$$A = x^2 + \frac{200}{x} \quad x > 0$$

- 6) Find the center and radius of the circle with the given equation

$$4x^2 + 4y^2 - 24x + 16y - 20 = 0 \quad \text{Divide by 4}$$

$$x^2 + y^2 - 6x + 4y - 5 = 0$$

$$x^2 - 6x + 9 + y^2 + 4y + 4 = 5 + 9 + 4$$

$$(x-3)^2 + (y+2)^2 = 18$$

(7 points)

$$\text{Center} = (3, -2)$$

$$\text{radius} = \sqrt{18} = 3\sqrt{2}$$

Solve

7)

$$1 - \frac{9}{5x} = \frac{7}{3}$$

Multiply by  $15x$

(7 points)

$$15x(1) - 15x \frac{9}{5x} = 15x \frac{7}{3}$$

$$\begin{array}{r} 15x - 27 = 35x \\ -15 \quad -15 \\ \hline -27 = 20x \end{array} \implies$$

$$x = -\frac{27}{20}$$

- 8) Find the average rate of change for the function  $f(x) = 4x^3 - 5x + 2$  between  $-4$  to  $x$

$x$	$y$
$-4$	$-234$
$x$	$4x^3 - 5x + 2$

$$\text{Avg Rate of Change} = \frac{4x^3 - 5x + 2 - (-234)}{x - (-4)} \quad (7 \text{ points})$$

$$= \frac{4x^3 - 5x + 236}{x + 4}$$

Algebraically Solve:

9)  $\sqrt{2x+3} - x + 10 = 10$

(6 points)

$$\sqrt{2x+3} = x$$

$$2x+3 = x^2$$

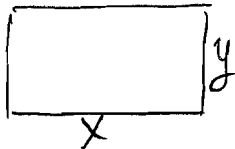
$$x^2 - 2x - 3 = 0$$

$$(x-3)(x+1) = 0$$

$$x = 3$$

$$\cancel{x = -1}$$

Extraneous solution



- 10) David has available 900 yards of fencing and wishes to enclose a rectangular area. (5 points Each)

a) Express the area  $A$  of the rectangle as a function of the width  $x$  of the rectangle.

$$2x + 2y = 900 \implies x + y = 450$$

$$y = 450 - x$$

$$A = xy = x(450 - x) = 450x - x^2$$

b) What is the domain of  $A$ ?

$$0 < x < 450$$

- 11) Write an equation of the line passing through the point  $(6, 5)$  and perpendicular to the line  $y = 3x - 5$ . (10 points)

$$y = 3x - 5$$

$$m = -\frac{1}{3}$$

$$5 = -\frac{1}{3}(6) + b$$

$$y = -\frac{1}{3}x + 7$$

$$5 = -2 + b$$

$$7 = b$$

- 12) Use long division method and perform  $3x^3 + 2x^2 - x + 3$  divided by  $x + 3$

(10 points)

$$\begin{array}{r}
 3x^2 - 7x + 20 \\
 \hline
 x + 3 \overline{) 3x^3 + 2x^2 - x + 3} \\
 \underline{\ominus 3x^3 + 9x^2} \phantom{+ 3} \\
 -7x^2 - x + 3 \\
 \underline{\oplus -7x^2 + 21x} \phantom{+ 3} \\
 20x + 3 \\
 \underline{\ominus 20x + 60} \\
 -57
 \end{array}$$

$$\begin{array}{l}
 \text{Quotient} = 3x^2 - 7x + 20 \\
 \text{Remainder} = -57
 \end{array}$$

13) Each month a gas station sells  $x$  gallons of gas at \$2.99 per gallon. The cost to the owner of the gas station for each gallon of gas is \$1.99, and the monthly fixed cost for running the gas station is \$27000. (10 points)

a) Find the cost function. (Hint: Cost = Variable Cost + Fixed Cost)

$$\text{Cost} = 1.99x + 27000$$

b) Find the revenue function. (Hint: Revenue = Price \* Quantity)

$$R = 2.99x$$

c) Write an equation that relates the monthly profit, in dollars, to the number of gallons of gasoline sold. (Hint: Profit = Revenue - Cost)

$$P = 2.99x - (1.99x + 27000) = 1x - 27000$$

d) If the monthly profit is \$113000, find the number of gallons of gas that are sold in that month.

$$113000 = 1x - 27000$$

$$140000 = x$$

Gallons

14) A wire of length  $10x$  is bent into the shape of a circle. (10 points)

a) Express the circumference of the circle as a function of  $x$ .

$$C(x) = 10x$$

$$2\pi r = 10x \Rightarrow r = \frac{10x}{2\pi} = \frac{5x}{\pi}$$

b) Express the area of the circle as a function of  $x$ .

$$A = \pi r^2 = \pi \left( \frac{5x}{\pi} \right)^2 = \frac{25\pi x^2}{\pi^2} = \frac{25x^2}{\pi}$$

15) Find the value of  $\frac{f(x+h) - f(x)}{h}$  assuming  $h$  is not zero for the function  $f(x) = 4x^2 - 5$

(Clearly state each of the steps of the process.)

$$f(x+h) = 4(x+h)^2 - 5 = 4(x^2 + 2xh + h^2) - 5 \quad (10 \text{ points})$$

$$f(x+h) = 4x^2 + 8xh + 4h^2 - 5$$

$$f(x+h) - f(x) = 4x^2 + 8xh + 4h^2 - 5 - (4x^2 - 5) = h(8x + 4h)$$

$$\frac{f(x+h) - f(x)}{h} = \frac{h(8x + 4h)}{h} = 8x + 4h$$

16) Given  $f(x) = -4x^2 + 5x + 35$ . Find  $x$  such that  $f(x) = 15$

(5 points)

$$-4x^2 + 5x + 35 = 15$$

$$-4x^2 + 5x + 20 = 0$$

$$4x^2 - 5x - 20 = 0$$

$$x = \frac{-(-5) \pm \sqrt{25 - 4(4)(-20)}}{8}$$

$$x \Rightarrow \begin{cases} 2.95 \\ -1.70 \end{cases}$$

17) Give the domain of the function.

(10 points)

a)  $f(x) = 3x^2 + \frac{2}{x-7} + 5$

b)  $f(x) = \sqrt{-5x+10}$

Domain is all Reals except 7

$$-5x + 10 \geq 0$$

$$-5x \geq -10$$

$$x \leq 2$$

c)  $f(x) = \frac{x+7}{x^2+x-42} = \frac{x+7}{(x+7)(x-6)}$

d)  $g(x) = \frac{x}{\sqrt{5-2x}}$

Domain is all Reals except -7 and 6

$$5 - 2x > 0$$

$$-2x > -5$$

$$x < \frac{5}{2}$$

18) Use Quadratic formula to solve the following:  $4x^2 + 12x = -2$

(6 points)

$$4x^2 + 12x + 2 = 0$$

$$x = \frac{-12 \pm \sqrt{(12)^2 - 4(4)(2)}}{8} = \frac{-12 \pm \sqrt{112}}{8}$$

$$= \frac{-12 \pm 4\sqrt{7}}{8} = \frac{-3 \pm \sqrt{7}}{2}$$

$$x \Rightarrow \begin{cases} -0.177 \\ -2.823 \end{cases}$$

19) Let  $P = (x, y)$  be a point on the graph of  $y = 2x^2 - 8$  (10 points)

$(0, 0)$   
 $(x, 2x^2 - 8)$

a) Express the distance  $d$  from  $P$  to the origin as a function of  $x$ .

$$d = \sqrt{(x-0)^2 + (2x^2-8-0)^2} = \sqrt{x^2 + (2x^2-8)^2}$$

b) What is  $d$  if  $x = 0$ ?  $d(0) = \sqrt{0^2 + (-8)^2} = 8$

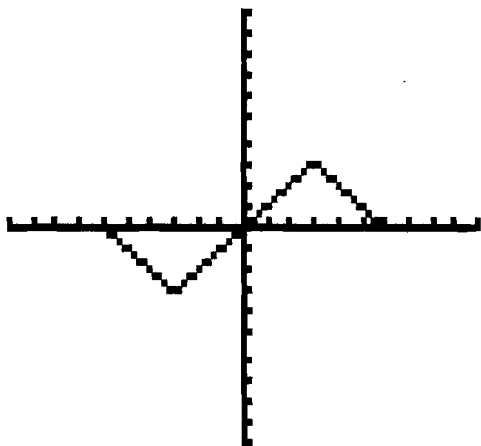
c) What is  $d$  if  $x = 1$ ?  $d(1) = \sqrt{1 + (-6)^2} = \sqrt{37}$

d) For what values of  $x$  is  $d$  smallest?

$$x = \pm 1.97$$

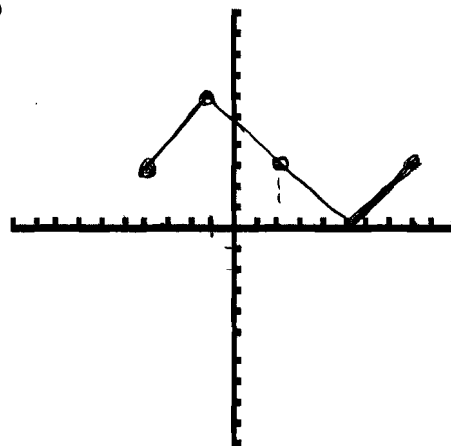
20) The graph of  $y = f(x)$  is given below; (7 points)

x	y
-6	0
-3	-3
0	0
3	3
6	0



Sketch a graph of  $y = -[f(x-2)-3]$

x	y
-4	3
-1	6
2	3
5	0
8	3



\* Shift Right 2

\* Down 3

\* Reflect About x-axis

21) **Extra Credit (10 points)**

Two cars are approaching an intersection. One is 2 miles north of the intersection and is moving at a constant speed of 50 miles per hour. At the same time, the other car is 3 miles west of the intersection and is moving at a constant speed of 35 miles per hour.

a) Express the distance  $d$  between the cars as a function of time  $t$ .

$$d = \sqrt{(2-50t)^2 + (-3+35t)^2}$$

b) At time  $t = 1$  Hour, what is the distance between the cars?

$$d = \sqrt{(2-50)^2 + (-3+35)^2} = 57.69 \text{ miles}$$

