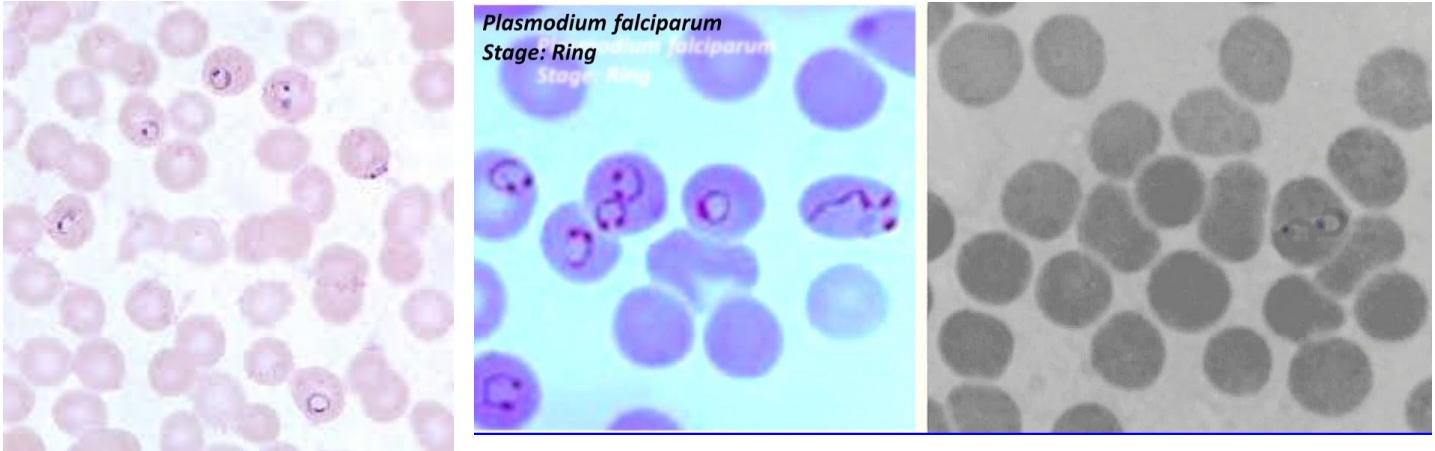


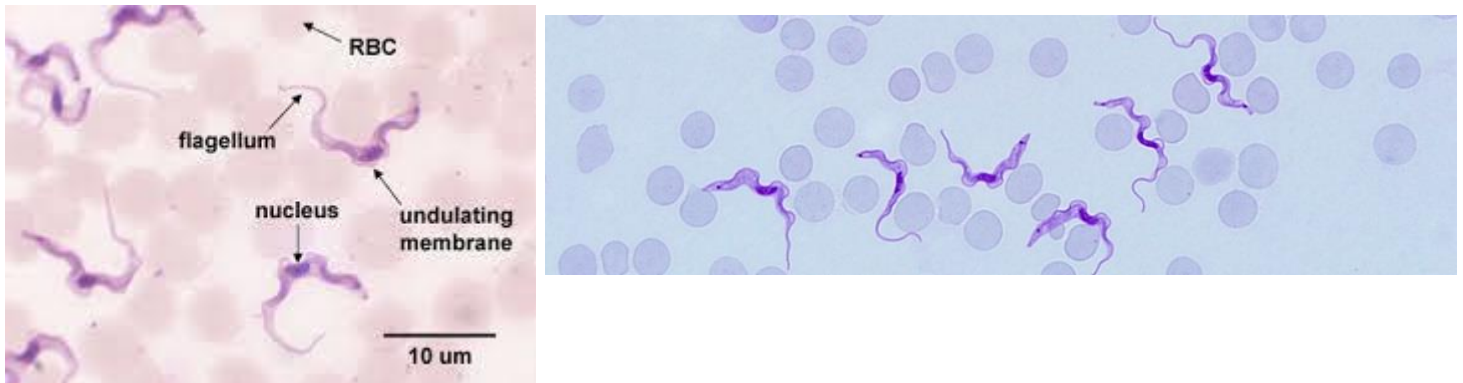
Parasitic and Live Protozoa

Parasitic Protozoa

Plasmodium causes malaria. It is transmitted by female mosquitoes. It is an intracellular parasite with many stages in its life cycle. You must be able to recognize the signet ring stage.



Trypanosoma causes sleeping sickness. It is transmitted by the Tse Tse fly. It is an extracellular parasite. You must be able to recognize *Trypanosoma*.



Live Protozoa

Wet mounts of various live protozoa are observed to determine the type of locomotion/motility.

1. flagella (*Euglena*, *Chlamydomonas*)
2. cilia (*Paramecia*)
3. pseudopods (*Amoeba*)

You must know the types of locomotion/motility used by protozoa.