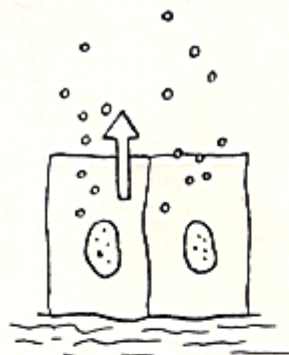


A longitudinal section through the root of a nail.



merocrine or eccrine secretion



apocrine secretion



holocrine secretion



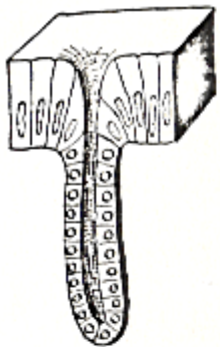
Tubular



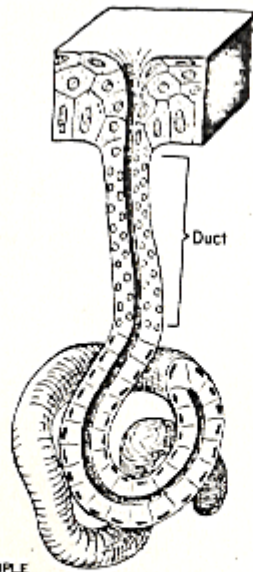
Acinar



Alveolar (Saccular)



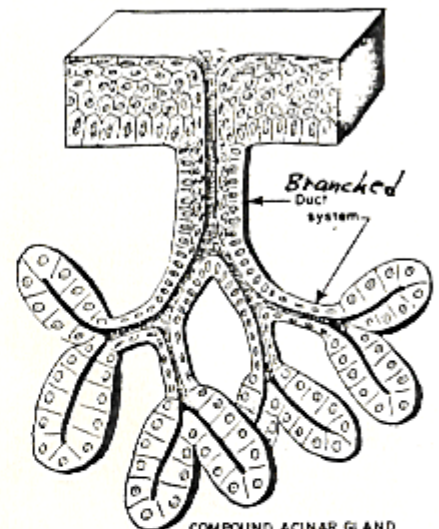
SIMPLE TUBULAR GLAND (e.g. Intestinal glands)



SIMPLE COILED TUBULAR GLAND (Sweat glands) - eccrine -



BRANCHED TUBULAR GLAND (e.g. Gastric glands)



COMPOUND ACINAR GLAND (e.g. Salivary glands)



SIMPLE ALVEOLAR GLAND (Saccular)



BRANCHED ALVEOLAR GLAND (e.g. Duodenal gland)