

— Cabinet —



**Board of Trustees**



**President**

**Dr. Jermaine F. Williams**



**Chief of Staff**  
**Dr. Stephen Cain**



**Senior Vice President/College Provost**  
**Academic Affairs**  
**Dr. Deidre Price**



**Senior Vice President**  
**Administrative & Fiscal Services**  
**Mr. Sherwin Collette**

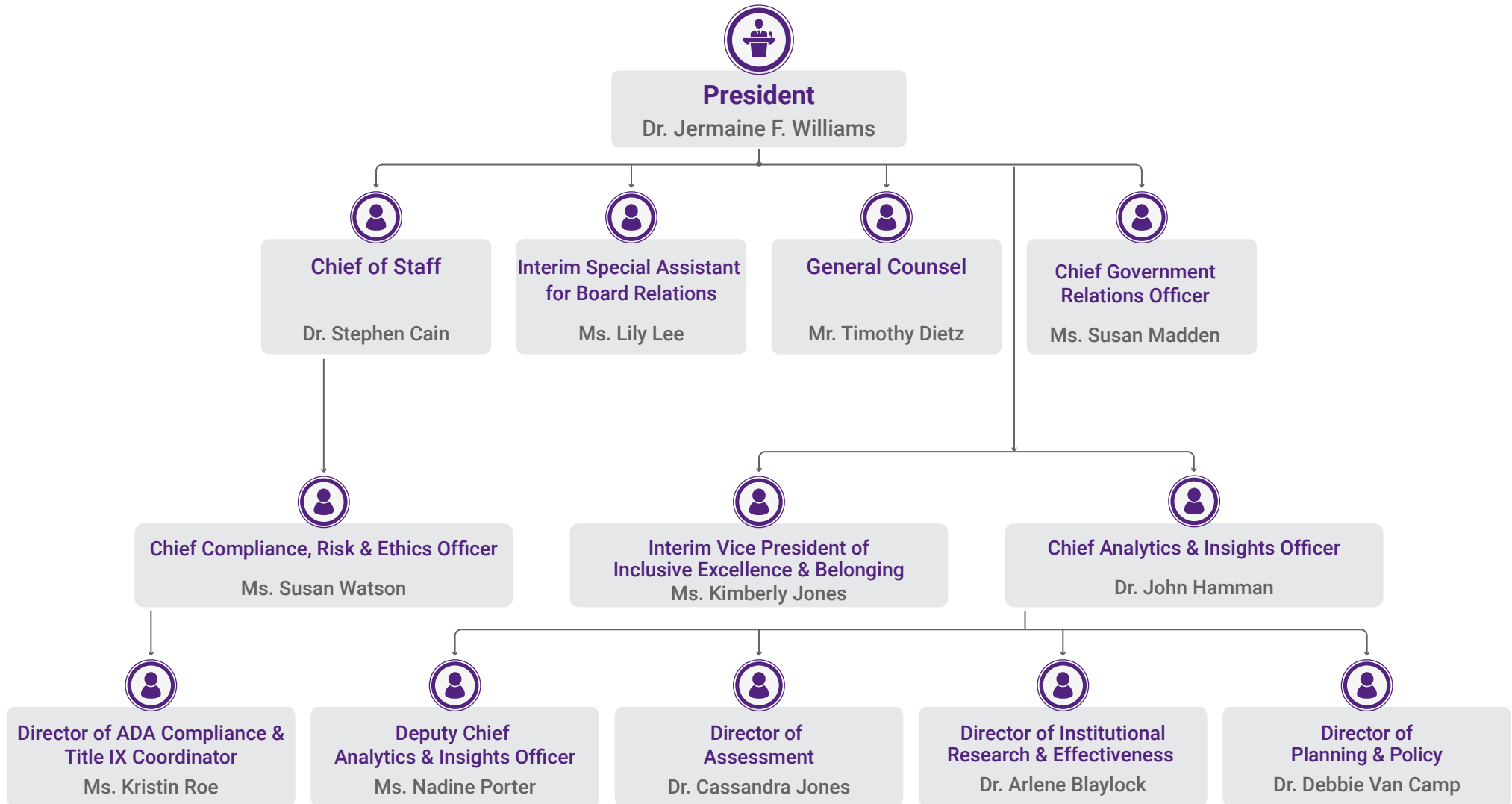


**Senior Vice President**  
**Advancement & Community Engagement**  
**Dr. Michelle Campbell**



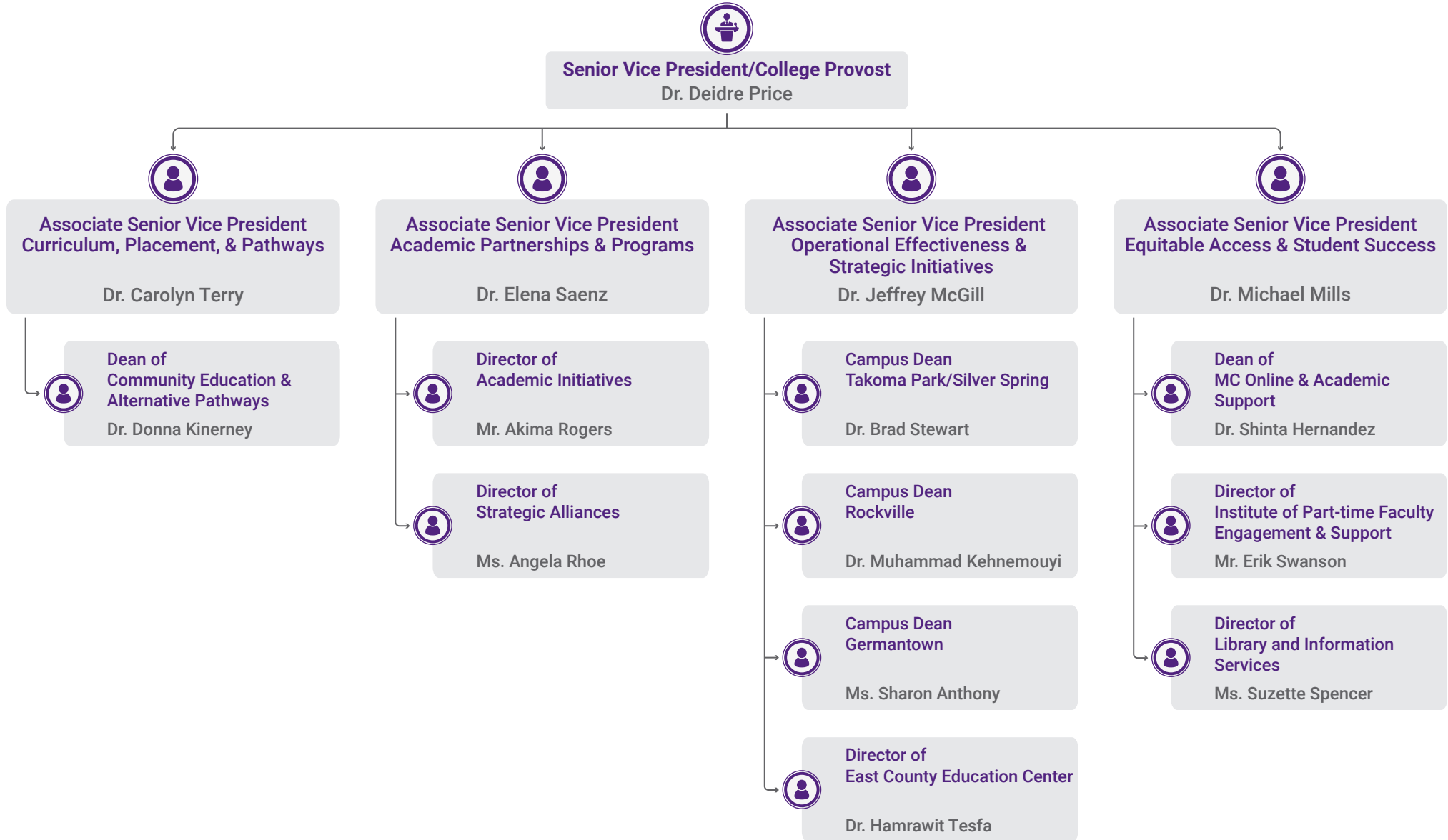
**Senior Vice President**  
**Student Affairs**  
**Dr. Tiffany Ray-Patterson**

— Offices of the President —



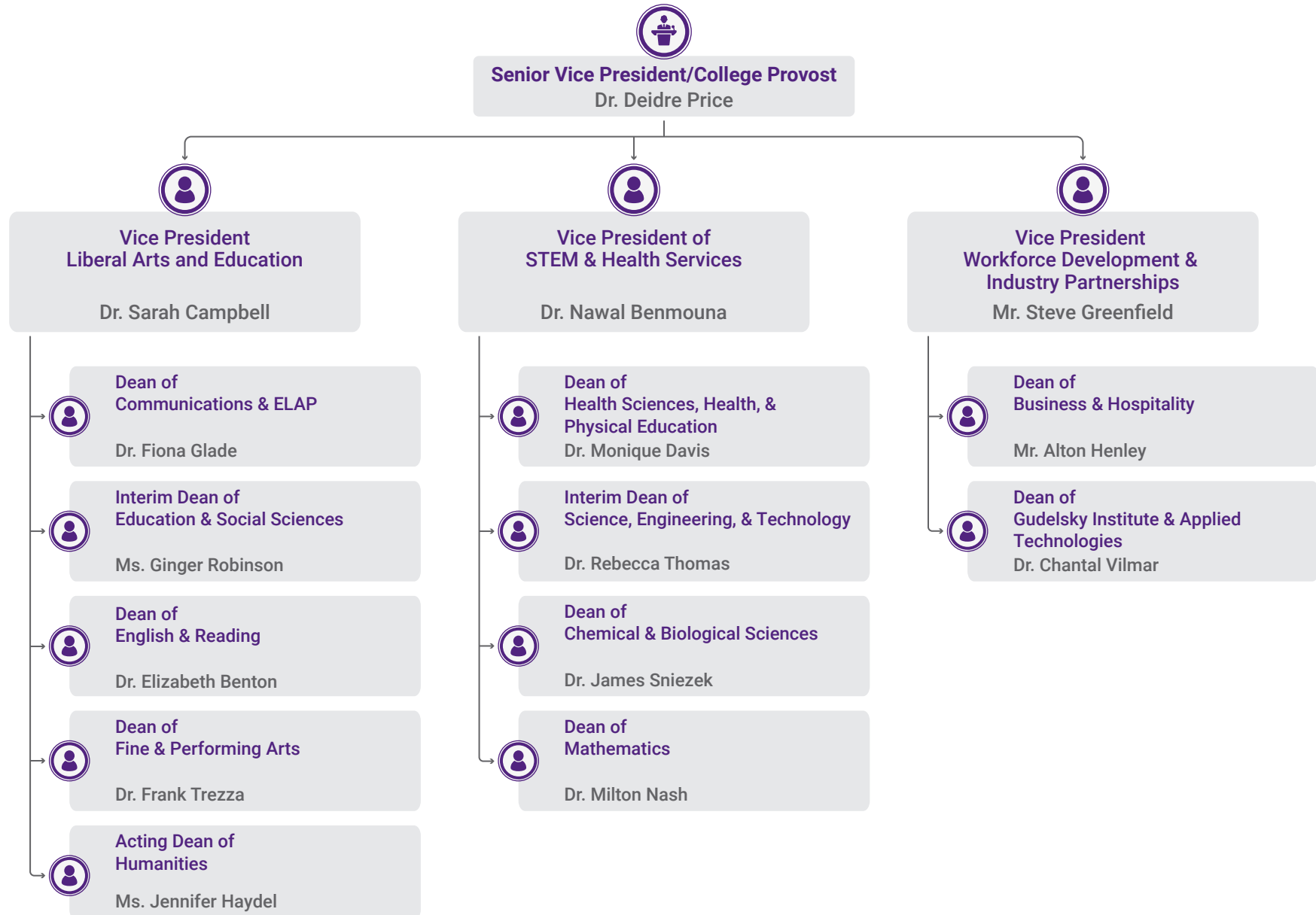
## Division of Academic Affairs

Associate Senior Vice Presidents (Part 1 of 2)



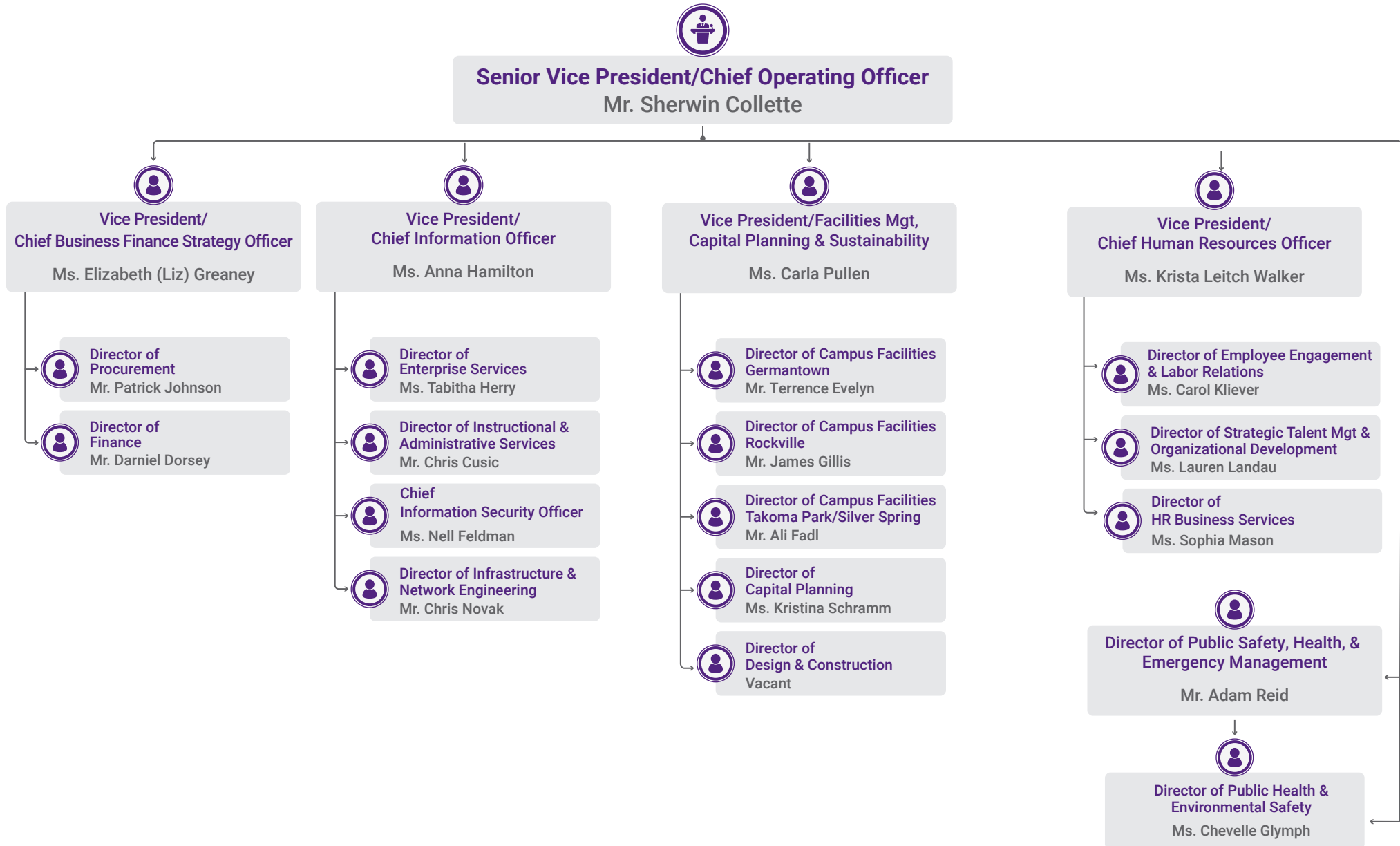
## Division of Academic Affairs

Vice Presidents (Part 2 of 2)

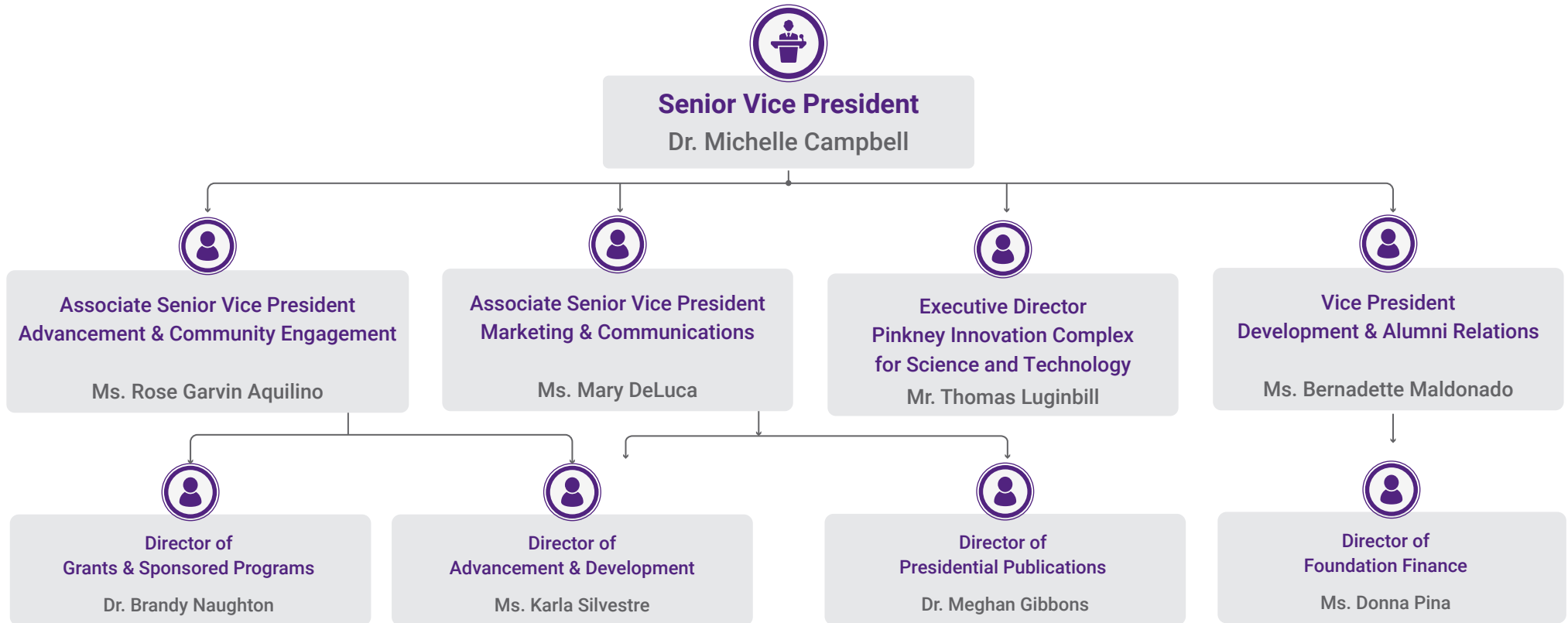




— Division of Administrative & Fiscal Services —



— Division of Advancement & Community Engagement —



— Division of Student Affairs —

