

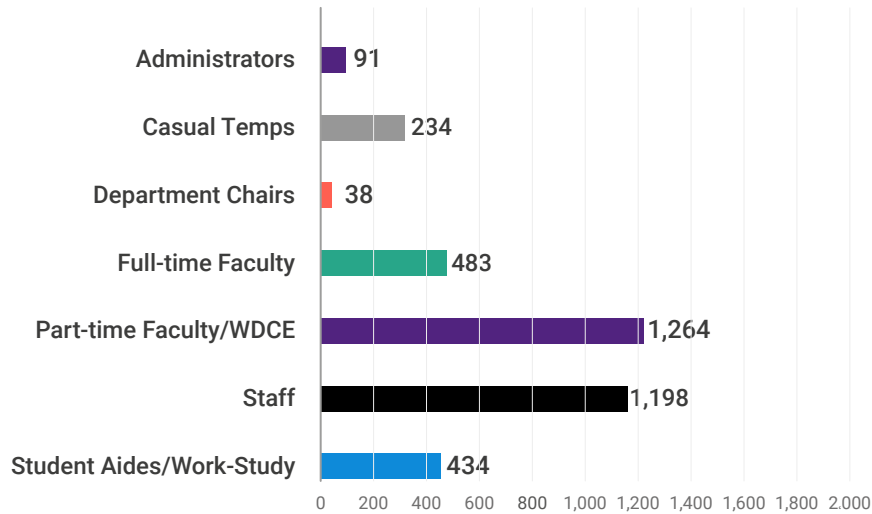


Office of Human Resources and Strategic Talent Management

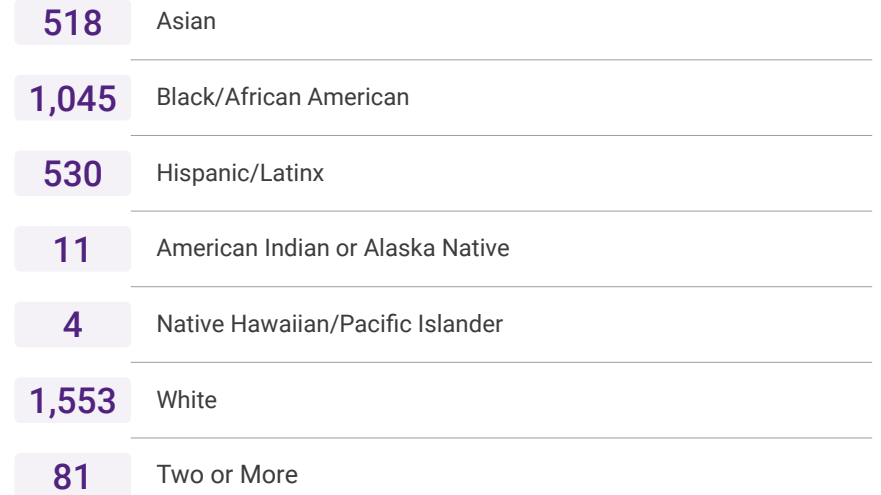
FISCAL YEAR 2025 | QUARTER 4 REPORT

April 1 – June 30, 2025

Employee Headcount by Type*



Employee Headcount by Race/Ethnicity*



Gender*

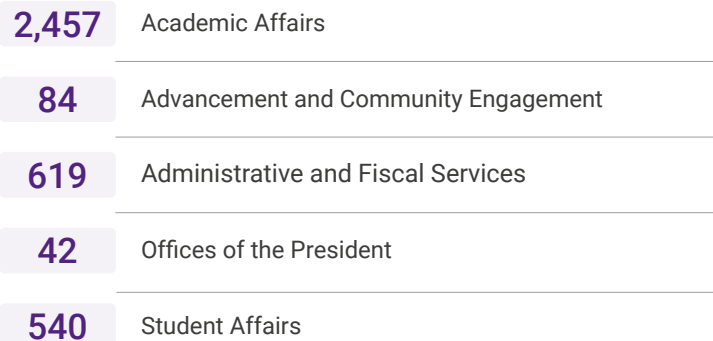


Female

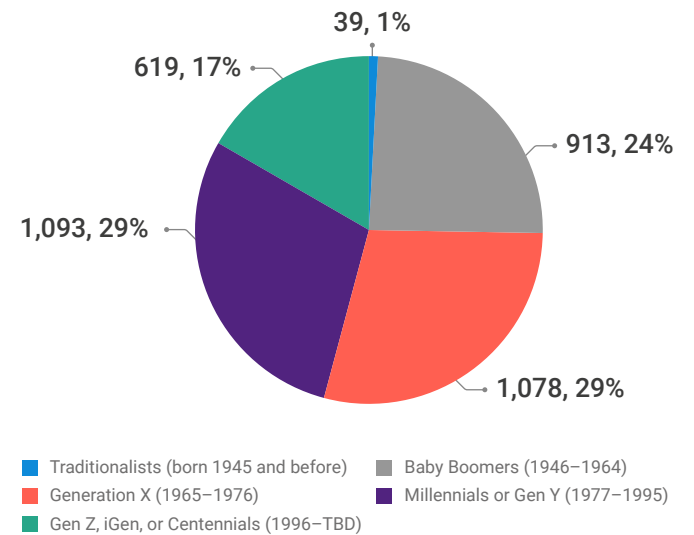


Male

Employee Headcount by Division*

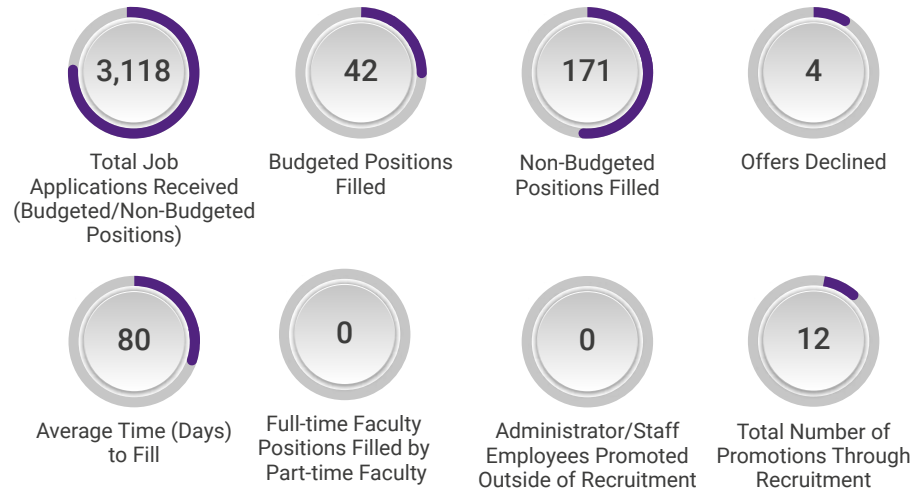


Employees by Generation (Age)*



Data represents snapshot as of June 30, 2025

Talent Acquisition and Employment Demographics



Recruitment and Hiring Demographics[‡]

[‡]Excludes one (1) hire who did not disclose race/ethnicity

Recruitment Stage for All Budgeted Positions



Organizational and Employee Development by Programs/Activities

- 10** Employee Trainings on HR Content

- 31** HRSTM Representation/Participation at Campus Events

- 8** New Employee Orientations: Staff and Supervisors

- 27** Exit Interviews Completed

Organizational and Employee Development by Employees Served

- 96** Coaching and Consulting Services

- 227** Onboarding Support (I-9s and New Hire Follow-Up)

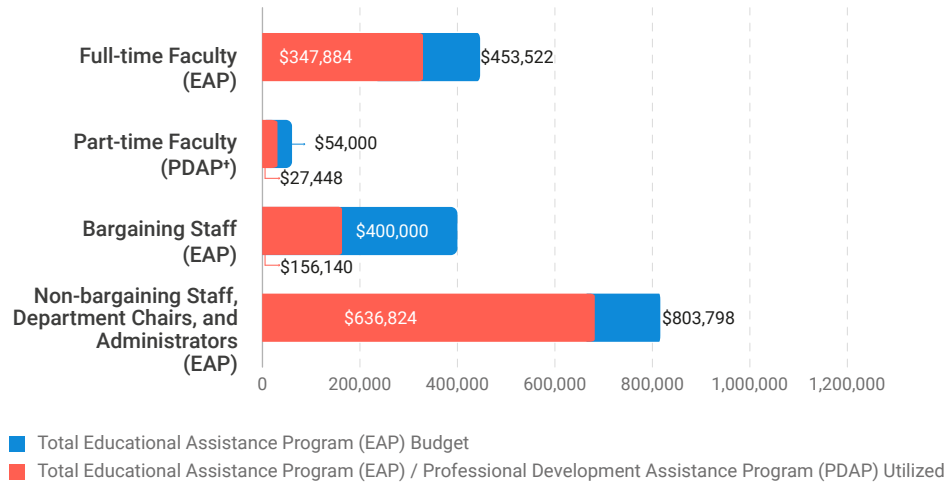
- 85** Staff Special Recognition Awards

- 45** Total Wellness Participants (may include duplicate headcounts)

- 5** Workforce Strategy Partner Consultations

EAP and PDAP+ – General Utilization

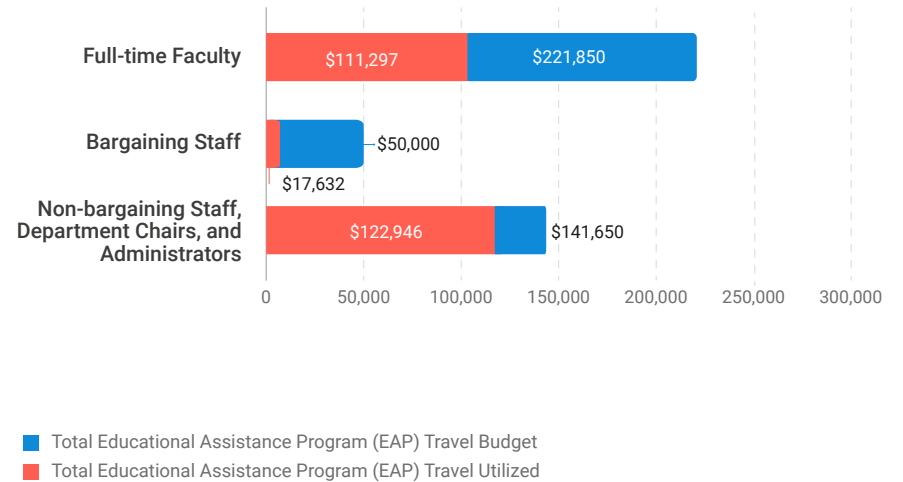
Budget figures represent annual allocations; utilization data is cumulative through June 30, 2025



*PDAP for Part-time Faculty includes travel

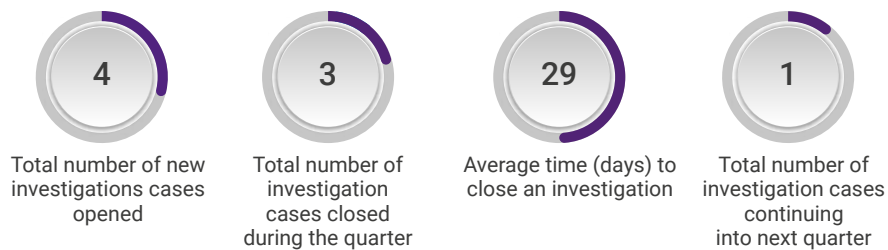
EAP – Travel Utilization

Budget figures represent annual allocations; utilization data is cumulative through June 30, 2025



Internal HR Investigations

Data reflects investigations during Q4 (April 1–June 30, 2025) only



Internal HR Investigations

Data reflects investigations during Q4 (April 1–June 30, 2025) only

